



1



2



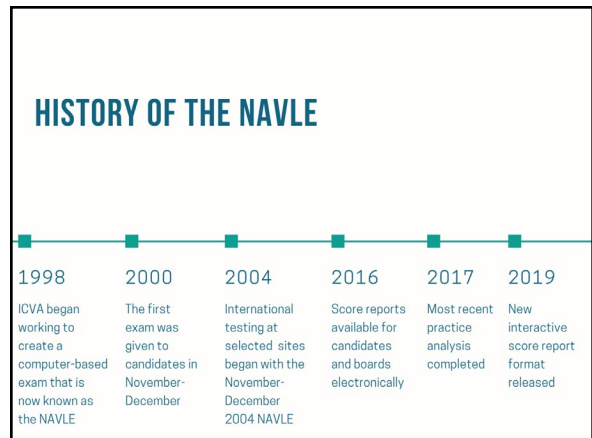
3



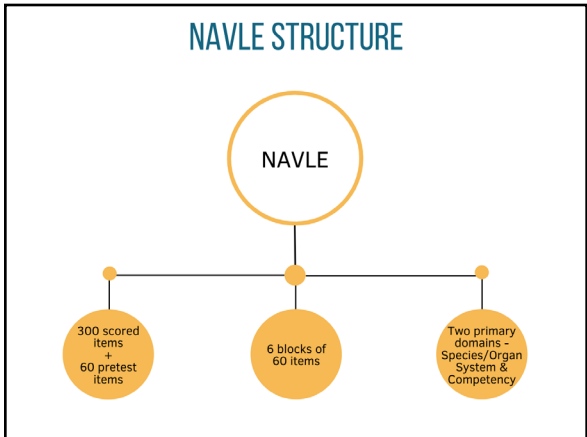
4

- The primary objectives of the NAVLE:**
- To provide a comprehensive, objective examination to state or provincial boards charged with the licensing of veterinarians;
 - To protect the public by ensuring that veterinarians demonstrate a specified level of knowledge and skills before entering veterinary practice;
 - To assess the professional competency of veterinarians in terms of their qualifications to enter practice;
 - To provide a common standard in the evaluation of candidates that will be comparable from jurisdiction to jurisdiction;
 - To contribute to the veterinary profession through the development of improved definitions of the relationship between knowledge and professional practice; and
 - To facilitate interstate and interprovincial licensing reciprocity for practicing veterinarians.

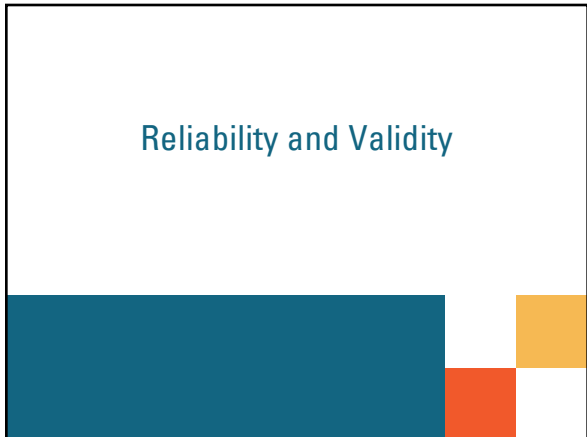
5



6



7



8

What is Reliability?

- Reliability answers the question, "if one administered the same examination to the same students under the same conditions, would it yield the same results?"
- Reliability is a property that applies to **scores**, NOT tests

9

"... degree to which evidence and theory support the interpretations of test scores for proposed uses of tests."

(AERA, APA, & NCME, 2014, p.12)

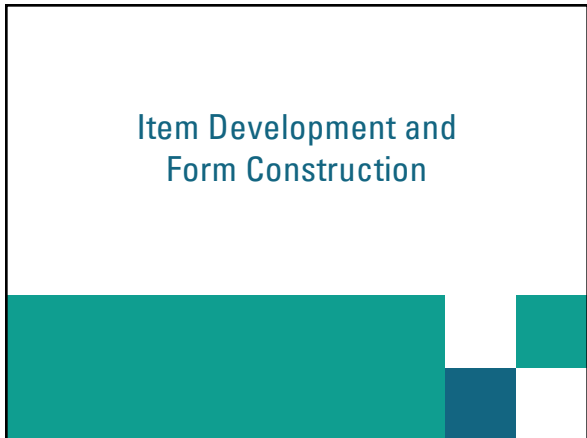
WHAT IS VALIDITY?

10

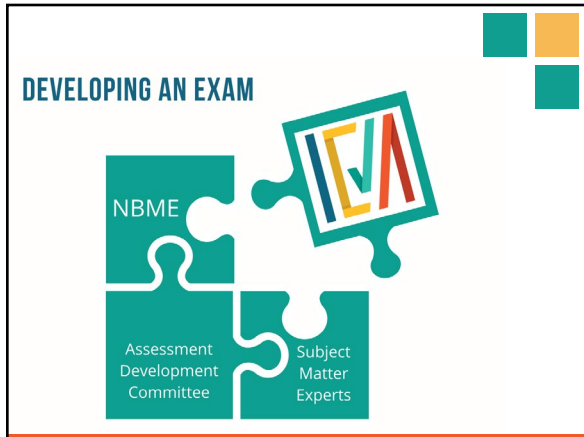
Why a licensing exam?

- NAVLE Objectives:
 - To protect the public by ensuring that veterinarians demonstrate a specified level of knowledge and skills before entering veterinary practice
 - To provide a common standard in the evaluation of candidates that will be comparable from jurisdiction to jurisdiction

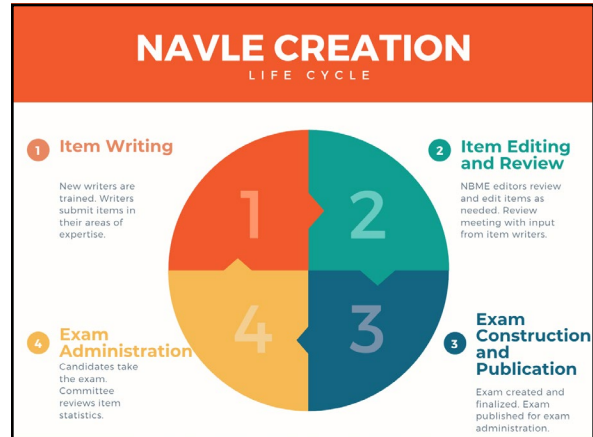
11



12



13



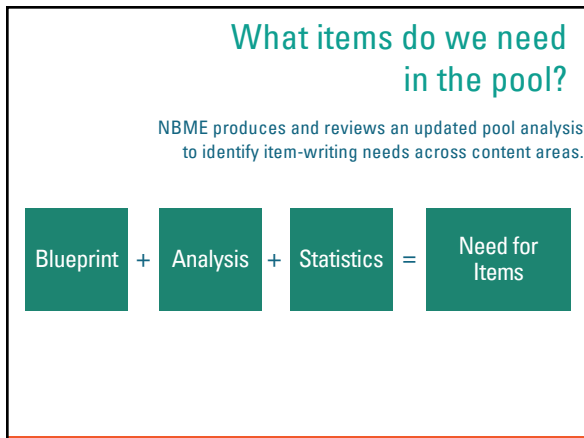
14

- ### Item Writer Recruitment and Selection
- Official call for nominations sent out annually
 - All nominees added to database for potential future participation on ICVA committees
 - New item writers selected annually
 - Based on item writing needs
 - Attend Item Writer Workshop
 - Volunteers selected to cover all topics on NAVLE blueprint
 - Interested in volunteering? Email mail@icva.net and mention "Item Writing" in the subject

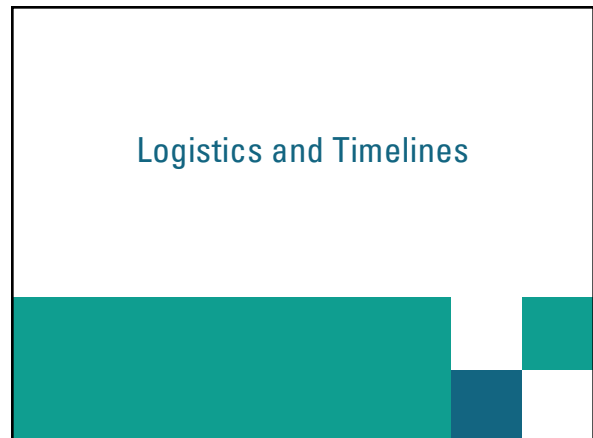
15

- ### Item Writer Training
- New item writers are selected annually based on item writing needs
 - All new item writers must participate in item writer workshop:
 - Annual ½ day meeting facilitated by NBME
 - Overview of best practices in item writing
 - Hands on group writing and review exercise
 - Focuses on criteria for evaluating test questions and avoiding technical writing flaws
 - Goal of training is to provide new item writers with tools to construct good NAVLE test questions


16



17



18



NAVLE: Who, What, When, Where?

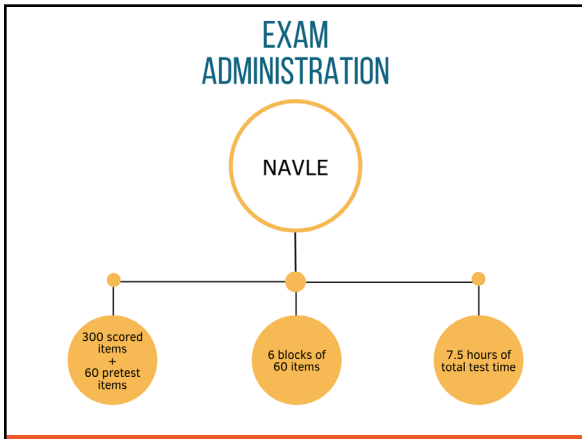
- **Who:** The NAVLE is only administered to:
 - Graduates of AVMA-accredited veterinary schools
 - Senior students at AVMA-accredited schools
 - Foreign graduates enrolled in or that have completed ECFVG/PAVE programs.
- **What:** The Exam
 - Sections are NOT organized by species/competency
 - Available in English and French
 - Accommodations available

19

NAVLE: Who, What, When, Where?

- **When:** Fall and spring testing window
- **Where:** Prometric Testing Centers (almost everywhere!)
- **Then What:** Candidates who receive a passing score can complete the licensure process in their respective state or province or transfer scores

20



21



22

Score Reporting

- The Score Report contains the following:
 - Pass/Fail decision
 - Total test scale score and Minimum Passing Score
 - Performance on each content area of the examination
- Score Reports are distributed directly to examinees w/copies sent to:
 - Licensing Agencies
 - Schools for examinees who gave permission for scores to be released to the school
- Score Information
 - AAVSB archive for score transfers

23



International Council for
**Veterinary
Assessment**

Setting a higher standard together

24